



## WAITPINGA GUIDE (Cephalopod Wall) New Routes

VERSION 6 (as of 14.2.2008)

MAKE SURE YOUR READING THE MOST UPDATE VERSION,  
check with Climbing Club or email me [lpgdaish@internode.on.net](mailto:lpgdaish@internode.on.net)



### ACCESS INFORMATION

You must ring “**prior**” to entering the private property of Alister Carmichael

**0422 845 470**

or Bernie Carmichael on 8552 3799 ( leave message )

**DON'T ENTER PROPERTY UNTIL YOU HAVE MADE DIRECT CONTACT WITH THE CARMICHAELS**

**Intro** : I have attempted to described both new and old routes within this area to the best of my ability. The older routes apart from maybe Buoy Oh Buoy are not in good condition to climb. Dirt, shrubs and the inability to rap back down to the bottom make them difficult to repeat. It is very difficult to even establish where they actually go within the top half of the cliff. “GMC” will be OK when the first pitch rap station goes in. (this looks nice). “Bark worst than it’s Bite” is not bad but there is no rap station as yet. I suggest climbing into the climb “Clear the Deck -EASY ” at about the 25 m mark. Buoy Oh Buoy is a high priority for me to clean as I think it hasn’t been freed as yet. Let me know if anyone has actually freed the route.

Lots of the old climbs that are describe in the old climbing guide as “scrambles through sand and mud” so to speak. I have left these out. **This is not a complete guide!** Just an attempt to provide some information to climbers about the new routes here and possible attempts at some of the older routes. **The access to the cliff is the gully on the left of the cliff as you look out to sea.** But first, to get to the top of the cliff is explained below

Entry into the paddocks is at Bernies’ house, which is the **only** house on the left of Waitpinga road. About 50m past his house is gates in which you turn left into. Follow the photos through the paddocks. There are about 5 gates, **all need to be left how they are found and double check that they are shut correctly.** If you get lost then head for the water tank on the hill, then head for the coast fence then follow it EAST till you reach the group of trees and the Park Climbing sign. The place to park is easy to find, as it is in front of a large bunch of trees that are located in the paddock about 40m back from the fence and gate. The area of these trees is about the size of a house. This is the **only** group of trees this close to the fence line.

You **MUST** ring prior to coming. Carmichaels are very happy to let climbers through and Alister climbs down there all the time. This aspect of climbing at Waits is probably the most important as there is **NO OTHER ACCESS** to Waits except along the Heysen Trail, which would add about 90 –120min to the walk in time!

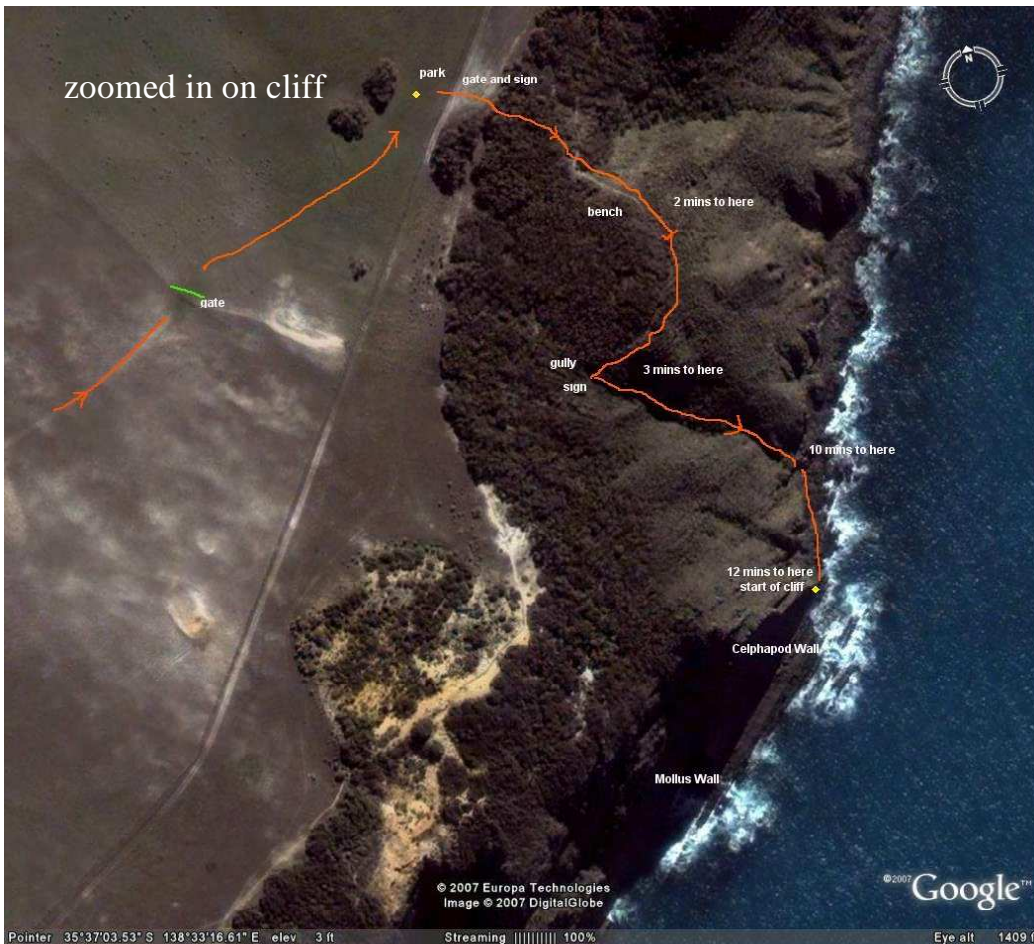
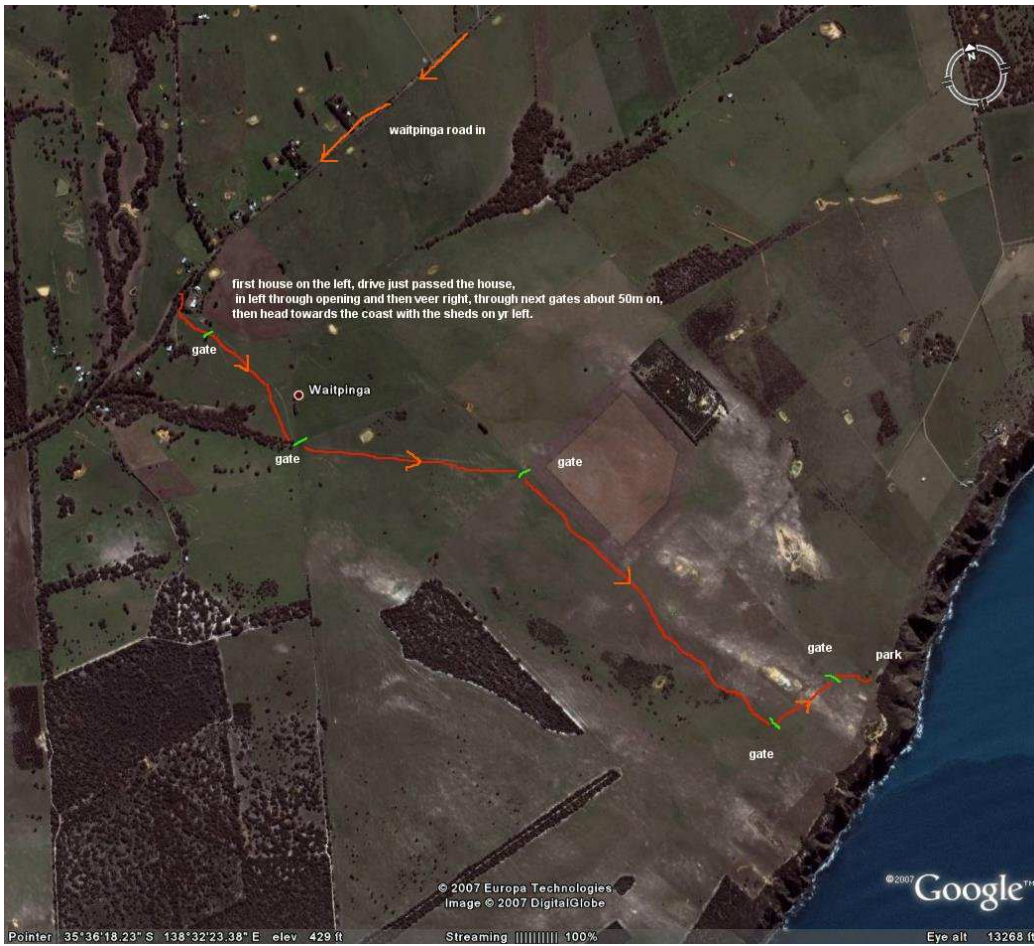
When you are at the gate where the Parks information sign is, park and walk slightly left, down through the trees to a path then follow this right to a small gully /creek. There is a sign in the gully. **This is the access gully!** From the car to the start of the Gully should only take 3-5 mins. Go down this and the cliff is on yr right about 50m along the seashore. Keep all your gear on the highest point. Waves can get big. I’ve only been washed off once! , no come to think of it... twice in the same day, off the same rock. That’s the trouble when you’re belaying someone, you can’t really leave them!

I'm happy to show people the cliff and the climbs. A little time in advance is helpful. This seems to be the best way to climb the cliff for the first time, although I think the guide will help a lot, or go with someone who has already been there. You need at least 2 bolt plates and lots of draws as some of the climbs are long. "Clear the deck -EASY" and "clear the deck" are 48m long with 13-17 bolts and about 4 natural placements if you don't like running it out. A general rack will do if your not just Sport climbing. Apart from a few easy climbs the bolts are fairly spaced. However, the feedback I'm getting is that they are about right. The bolts are good though, 316 glue-ins, Hilti chem sets. Even the one looks like an expansion bolt, they are still 316 glue threaded rod. Bolts down low are 316 hexagonal headed glue-in bolts which need hangers. Some climbers have had trouble fitting their bolt plates over the hexagonal head, so I have taken the corners off. This should help. Visual aspect of too many bolts may upset some people. This is why some down low are without hangers. Some hangers are home made with 5mm 316. So that's about 5000kg breaking strength and a half-life fully emerge in seawater of about 500yrs so I think they will hold! If climbing club wants me to replace these with commercial standard, I will.

**GRADES :** grading has been hard as I have climb these climbs lots before they have been lead and freed. I have graded as you would experience it as an "on sight", as once you have climbed these slab /face climbs they seemed to be easier like most. I personally don't get caught up in grades any more like I use to. Now I just think of them as puzzles. In this way it seems to stop the stress of getting the grade wrong. I find it helpful in climbing to think a little simpler. EASY up to grade 13ish, MED up to 17ish, HARD up to 20ish, VERY HARD up to 24 and EXTREME over 24ish. Grades will also settle after lots more have climb them. Feedback is very welcome. I'll change the grade and staring as more opinions come forward.

**BOLTS :** Please note that some bolts that have a Hexagonal head on them (NOT a threaded nut). These are 316 bolts set with the hangers loose! So that they spin and clear any salt build up. There is no way they can come off so don't try and tighten them. You'll break yr spanner. Refer to last page "bolt info".

Entry to farm and across paddocks (RING PRIOR TO ENTERING THE PROPERTY!)  
0422 845 470



**(RING PRIOR TO ENTRING THE PROPERTY) 0422 845 470**

I've started the climbs in reference to "Buoy Oh Buoy", which has 2 stars, and "A Good line" which has 3 stars. A 60m rope just makes the ground from the major horizontal. Climbs are described left to right. (print the color diagram out and take it with you as this will be more helpful than words). **TIE KNOTS IN BOTH ENDS AS TOPROPING THESE CLIMBS IS ALMOST 60M**

**"Clearing yr Mind" chains at a big big stretch will top rope with a 50m rope**

**0. \*\* Taleah Grace 13 25m** ( 7 bolts ) A great warm up for beginner leaders. Bolts are far more spaced at the top than the bottom but climbing difficulty is the same. Start on the big rock at the far left on the pond. Step up and across easily to the first bolt about 4m off the ground and about 6 m right of your starting point (hanger needed). Follow the bolts up the wall to a double bolt belay. Although it is very easy ( grade 4-6ish) climbing, you may want to take a small cam or small wire to protect just before the first bolt.

Peter Daish, Jordy Moffat June 2007.

**1 \*\*\* Sea Lion 18 / 20 55m.** The 200 foot vertical crack in the middle / left side of the pool. You can't miss it. Traverse in from the left from Taleah Grace clipping the first hangless bolt, then slide across the wall diagonally up to the first "RING" bolt. Engage the crack passed another 8 ring bolts. A now very safe lead on close bolts. You can stop at the anchor of "Georgie Rose" to make it a very easy grade 13ish sports route. Second pitch is the best route above the horizontal. 3 bolts, small- medium wires and medium – big cams needed. Double bolt belay at each pitch. Double 60m ropes will reach the ground. Damien Hall, Peter Daish, Jan 2000. 2<sup>nd</sup> pitch freed in Jan 2008. YES we finally got back on it as we got washed of the cliff last time!! First pitch freed by Hall and Daish on all natural gear but as the gear was suspect we retrobolted our own climb to be enjoyed by the masses.

It is now possible to do lots of multi pitching here. You can link "Georgie Rose" into Sea Lion for a grade 18 then another 18 of Sea Lion. OR Sea Lion to Georgie Rose anchors (13) then on to the rest of Sea Lion (18) then continue the 2<sup>nd</sup> pitch (20). With all double bolt belays and easy retreat it just what climbers have been dreaming of but had to wake up from their dreams and travel over seas to enjoy.

**1A \*\* Georgie Rose 18 30m.** (5-6 bolts) Start at Buoy Oh Buoy. The very last bolder in the water on the right of the pond. Up 5m to bolt without hanger and head left 4m to a welcome little horizontal cracks. Clip second hang less bolt. Keep travelling diagonally across into B Oh B's crack, crossing straight over it into the lovely diagonal slashes across the wall. Head up to through the vertical slashes on good gear (rocks, small / med cams) and clip the first of 4 bolts on that wall, well left of "B Oh B" crack. Keep going up the wall. Clip the last bolt and then traverse left into Taleah Grace's double bolt belay. The initial traverse above the water is the hardest bit at grade 16 to 19 depending how many holds you miss!!! A semi conscious seconder is handy as you go for the first bolt! The rocks you step off of may be under water if it is high tide. You can then still traverse in but a lot harder. Peter Daish, Jordy Moffat, April 2007.

**2. \*\* Buoy Oh Buoy 22 A0 55m.** To my knowledge hasn't been freed yet. The first pitch is a ripper, All natural gear until the 2 bolts (crux). Traverse in from the right of the pond right below bolt without hanger at 5 m Gear gets small as you reach the bolts. 30m. Second pitch has not been done for a while as crucial hold has come off. Tony Barker, Mike Broadbent, March 1990.

**3. \*\*\* Achilles Gambit 21 / 24 55m.** (11 bolts) 2 hangers needed. Starts as for Buoy Oh Buoy and Georgie Rose (Closest rock that you can step off from within the pool). 2m right of Buoy Oh Buoy is 2 little horizontal slots on the wall. Your heading for these 2 slots and then up up up. To start - up wall with small crack to bolt @ 5m. clip and traverse under the bolt left to another bolt at the 2 little horizontal slots. Clip 3rd bolt ( first with hanger) above you then another and traverse right 2m and up thin line past 2 bomber medium rock placements (if you need them) to 6th bolt. Continue to small hole in wall and 7<sup>th</sup> bolt. Move slightly right and up the thin line /crack past 4 more bolts (crux) to the chains at the horizontal. This climb doesn't drop below 19 the whole way. 2nd pitch goes straight up past 3 bolts to a 3m left traverse (crux), Small cam needed. Climb into the crack then straight back onto the wall again past 2 more bolts. Medium cams needed for the head wall. At the

top traverse left into Buoy Oh Buoy chains. Take some medium cams for the top wall. (Peter Daish, Damien Hall, Jaimie Holland.) Oct 1999.

**4. GMB (Geru memorial buttress) 18 25m** Currently not in great shape. Traditional boltland needs replacing. I'll climb it and where grade 18 turns to high 20's, I'll place the anchor. I think it is where Smooth Criminal crosses, however, when I was climbing across GMC it was more like 23 than 18. Hopefully I was in the 2<sup>nd</sup> pitch and this was originally aided.

This pitch starts at the second to last boulder in the water. (it is sometimes under water) at a nice crack system. Looks fantastic but hasn't been cleaned as yet. So much to do, so little time!! When you see the belay established at about 5m below the horizontal, you will know that it has been cleaned and ready to climb

**5. \*\*\* True North 23 27m** (4 bolts) Takes the line of Atlas for the first 10m. Start in the crack at the right hand end of the water, 3m right of GMC. Follow the crack all the way till it meets Smooth Sailing. Effectively straight up the crack. Bloody fantastic!!! Once you clip the double bolt belay of T North easy, its 20 plus all the way, no rests what so ever. 4 bolts excluding clipping the double bolt belay of T. N, Easy. Peter Daish, Alister Carlmichael 29th April 2007

**5A \*\* True North EASY 15 17m.** This is a beautiful little climb in its own right. Fantastic protection with lots of rock and small cam placements, thread runner at the horizontal gash @ approx. 8m. double bolt belay. Climb True North to the double bolt belay, bomber natural protection all the way. Great intro to jamming. Peter Daish, Jordy Moffat April 2007.

**6. Atlas 20 55m** Read the guide but at the moment it leads into very dirty territory with no belays to get to the ground. Another great looking first pitch. This wanders a little and has been straightened up with the new climb of Lost Socks

**6.5 \*\* Lost Socks 18 30m** Climbs directly up the black wall 5 m right of Atlas and True North. Starts at the very end of the highest belay position. Any further left and you will fall into the water. Up to bolt without hanger then passed **2 ring bolts**. They are the only ring bolts within 15m. Passed these into the easy crack. Continue start up as normal crossing smooth sailing (bolt) into another thin crack (crux) until you reach the right diagonal. You have climbed straight up from the start to here. Now follow the diagonal left to the belay of Smooth Sailing and True North. (4 bolts, good natural gear). John Nankivell and Alister Carmicheal August 2007.

**7. Atlantic Cruise 20 55m** Very Dirty at the moment, very hard to climb to very top. Although the bottom has been cleaned a little the top hasn't been touched I think since its ascent. Take your ice axes.

**8. \* Clear the Decks - pitch one 17 20m.** (8 bolts) Takes the line straight up to the right side of the horizontal niche at 5m passed 2 bolts without hangers. Then follow the bolts up crossing Smooth Sailing then into the small vertical cracks left of the major crack of "Bark worst than its Bite". Pop left to finish at chains. Apart from the last 3m this route goes straight up. Peter Daish 2006.

**8a. \* Clear and Smooth 16 20m** (7 bolts) **8 into 13** "Clear the Decks into smooth and easy" is a great linked route. Probably a very likable climb. . Keep all the bolts after the first 2 to your right . (Peter Daish, Jordy Moffat March 2007)

**9. \*\* Clear the Decks 24 48m** (17 bolts) (12 bolts plus some medium cams to first horizontal). From the end of the first pitch of "clear the decks" truck on up missing the belay on yr left, move up into the crack and climb the **thin crack** pass 4 bolts on your left. From the 3<sup>rd</sup> to 4<sup>th</sup> is the crux. At the main horizontal click the bolt above (NOW AN ANCHOR) and climb / jam the crack that heads diagonally left for 4m. Climb the sharp flake to the bolt, then climb the wall following the bolts to the top and then the chains. Clip bolts on your left at the top as only this area has been brushed. Climbed from bottom to the top for the full experience. Take some medium and small cams and a couple-600mm slings to extend bolts. (Peter Daish, Damien Hall, 17.12.2001)

\* Although it has had only 1 other free ascent I suspect most will stop at the anchor at the horizontal. After this it is around grade 20 / 21 if yr interested. This climb could effectively be 3 pitches 17-24-21. all double bolt belays.

**10. \* Dutchy's Route , Clear the Deck –EASY” 18 48m** (14 bolts) as for clear the decks until after the first bolt on the **thin crack**, about 6 m above the belay, move right 2 m, to under the small overhang into major crack and follow the bolts all the way to the top.  
Still to be named. (Jaimie Holland , Peter Daish 2002). Some small to medium cams for the moves just past the belay at about 22-24m mark. Take some 300-450mm draws to extend runners or the rope drag will become difficult.

**11. Bark worst than its Bite 17 ??m** Nice climbing but no belay to get down as yet. So you could climb it and then climb into the unnamed 18 to the top as they touch each other at about the 26m mark. Still dirty

**12. \*\*\* Smooth Sailing 23 30m** (11 bolts) The major quartz line, starting 5m right of “bark worst than its Bite”. It goes up to the left across the wall. You cant miss it. Place your face at the bottom of this quartz line and tell me it isn't the best looking line you have seen for a while!! It builds from grade 12 to grade 23 slowly and steadily until the crux at the last bolt. Step right at the top once you have made “the move” into the easy crack. An absolute must. (Damien Hall, Peter Daish March 2007)

**13. \*\* Smooth and Easy 16 20m** (6 bolts) Climb Smooth sailing until the 6<sup>th</sup> bolt then head straight up the wall until you reach the belay 5 m above. Fantastic line and rock. Take some trad gear if it's your first 16 lead as the bolts are spaced. (Peter Daish, Damien Hall 2001). Second bolt needs a hanger.

**14. \* Smooth Criminal 24AO 35m** (12 bolts) Climb smooth sailing until you reach the vertical crack at about 22m (True North) and the second to last bolt from the top. Traverse left to below a bolt. Keep going through very difficult ground. A couple of single finger iron crosses might do it. Cross GMC and into Achillies gambit. A rest taken at the belay at GMC. (Peter Daish, Damien Hall May 2000)

**14.5 \* Mercy 13 18m** ( 5 bolts ) Climb directly up from smooth sailing start to the first bolt then keep going straight up the crack pass **4 ring bolts** to double bolt belay. This climb is easy to find as the ring bolts are the only ones within this area. Crux is from 1<sup>st</sup> to 2<sup>nd</sup> bolt.  
From the double bolt belay there are 2 ways to extend mercy to the double bolt belay of “Clearing the Mind”.

1. **Mercy Hard** climb straight up pass the next ring bolt then once passed the bolt head right on tricky moves to the next bolt straight above you. **Grade 20**. Keep climbing to chains. **OR**
2. **Mercy Medium** from the D.Bolt Belay head up the crack on your right, clipping bolt on your far left and then the next bolt on your left. Now the same as for mercy hard. **Grade 17**.

• A little contrived from the DB belay but 2 great little variances to test the Apprentice waits climber. Far far less committing than “Clearing yr Mind”

**15 \*\*\* Clearing the Mind 19 27m** (7 bolts) . 4m right of Smooth sailing is a small crack. 7 bolts heading straight up the wall to bolt belay. Follow the bolts. The climbing is easy when your run out and when it gets hard, what do you know?... a nice bolt to clip. Just Clear yr mind and climb on spaced bolts to the top. I generally keep all the bolts except the first 2 to my left as I climb the wall. If I do say so myself, I think I got this one pretty right. I don't recommend this one for yr first 19 lead. It will play with yr mind a bit.

(Peter Daish & Tom Lapies March 2007)

**16. Claw 14 35m** I think ??

More Waits Info contact

Peter Daish

0412 311 796

8552 1281-hm [lpgdaish@internode.on.net](mailto:lpgdaish@internode.on.net)



**(RING PRIOR TO ENTRING THE PROPERTY)**

**0422 845 470**

**DAISHY'S order of Attack for Climbing Waits**

- Ordered in terms the ‘seriousness’ of the climb.

**Fully bolted routes**

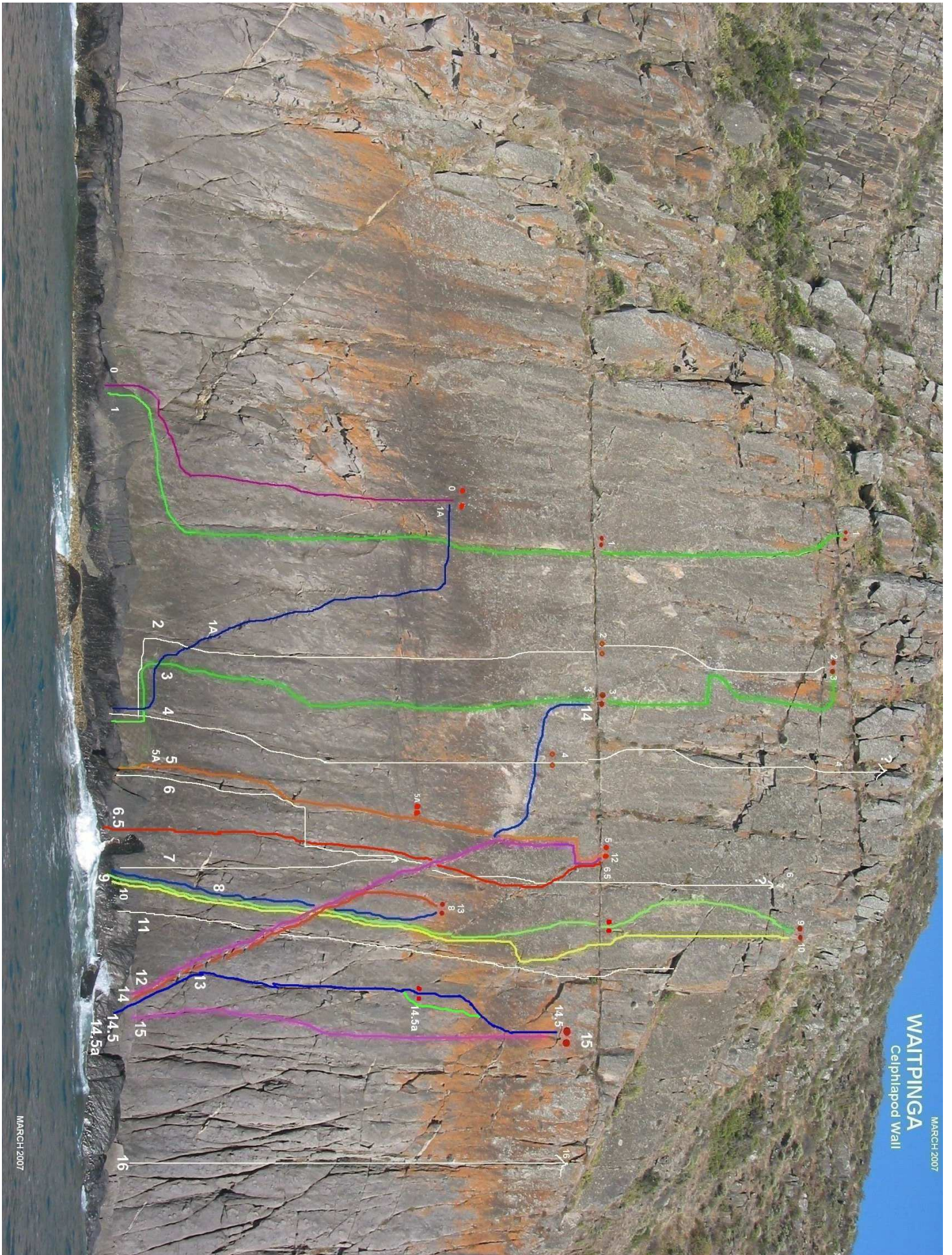
Sea Lion EASY	13
Mercy	13
Taleah Grace	13
Smooth and easy	16
Clear and Smooth	16
Clear the Decks pitch 1	17
Sea Lion	18
Mercy Medium	17
Mercy Hard	20
Clearing yr Mind	19
Clear the Deck –EASY	18
Sea Lion 2 <sup>nd</sup> pitch	20
Achillies Gambit	21
Smooth Sailing	23
True North 2 <sup>nd</sup> pitch	23
Clear the deck	24
Achillies Gambit 2 <sup>nd</sup> Pitch	24
Smooth Crinimal	24+



**Adding to the list natural and climbs combining both fixed and natural**

Sea Lion EASY	13
Mercy	13
Taleah Grace	13
Smooth and easy	16
Clear and Smooth	16
<b>True North easy</b>	<b>15</b>
Clear the Decks pitch 1	17
Mercy Medium	17
<b>Georgie Rose</b>	<b>16</b>
Mercy Hard	20
Clearing yr Mind	19
Clear the Deck –EASY	18
Sea Lion	18
<b>Lost Socks in red no. 6.5</b>	<b>18</b>
Sea Lion 2 <sup>nd</sup> pitch	20
Achillies Gambit	21
Smooth Sailing	23
True North 2 <sup>nd</sup> pitch	23
Clear the deck	24
Achillies Gambit 2 <sup>nd</sup> Pitch	24
<b>Buoy Oh Buoy</b>	<b>22+</b>
Smooth Crinimal	24+





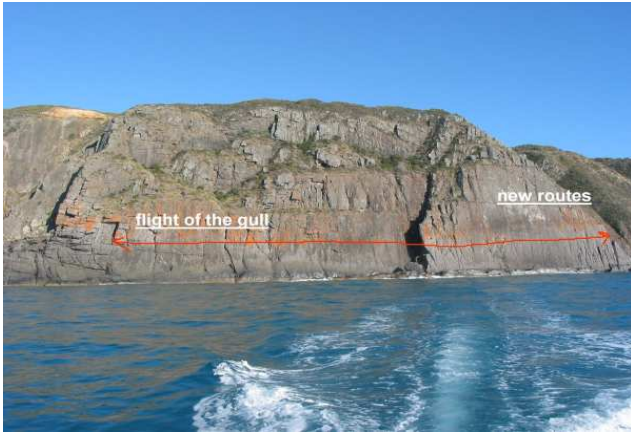
MARCH 2007  
WAITPINGA  
Ceplhlapod Wall



PHOTOS (RING PRIOR TO ENTRING THE PROPERTY)

0422 845 470

Daishy on "Clear the Deck"



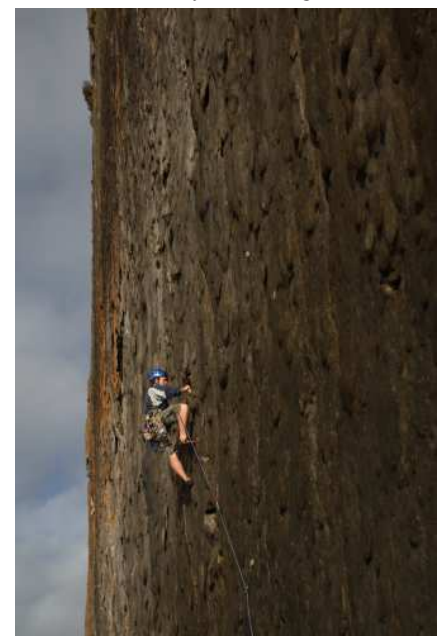
Hally on "Smooth Sailing"



Daishy on "Clear & Smooth"



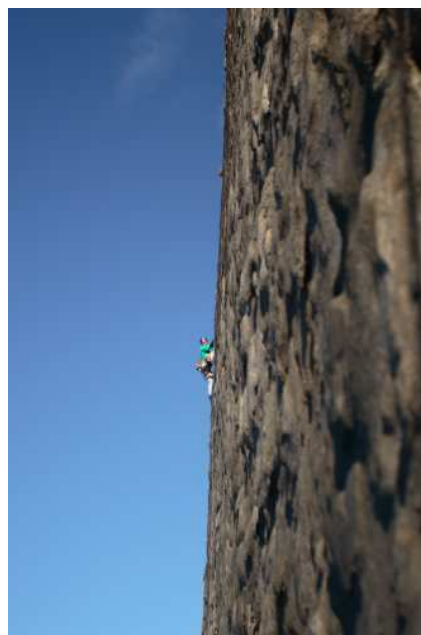
Johnny on "Georgie Rose"



Daishy on "True North"



Alister on "Georgie Rose"



(RING PRIOR TO ENTRING THE PROPERTY)

0422 845 470

**BOLT INFO**



**(RING PRIOR TO ENTERING THE PROPERTY) 0422 845 470**

Grade changes : Climb No.1 is now 18 / 20. No. 1A ( blue) is 18

